

ExTox - Introduction

ExTox Gasmess-Systeme GmbH

Explosive Gases

- Filling Station
- Combined heat and power station
- Landfills
- Agriculture: Biogas, Animal Stables, Silos
- Refineries
- Solvent Warehouses
- Petro Industries
- Automotive Industries

Toxic Gases

- Cooling Plant / Houses
- Food Manufacturing
- Semiconductor Manufacturing
- Airing Systems
- Chemical Industries
- Tunnels, Bus and Railway Stations
- Universities
- Hospitals, Healthy Industry
- Pubs



MITTELSTAND
GLOBAL
ENERGY SOLUTIONS
MADE IN GERMANY

Products



Sensor Principles

- Catalytical sensors
 - ▲ (Ex)Sens BG-WT, (Ex)Sens NH3-3-WT
- Electrochemical sensors
 - ▲ (Ex)Sens H2S-100-EC
- Semiconductor sensors
 - ▲ (Ex)Sens BG-HL
- Infrared sensors
 - ▲ (Ex)Sens BG-IR
- Temperature-, humidity- and pressure-sensors
 - ▲ (Ex)Sens TFD
- Thermal Conductivity sensors
 - ▲ Transmitter H2-30-WLD

Transmitters

- Series ExSens

- All sensor principles possible
- 4-20 mA output (alternative: 0-1V; 0-5V; 0-10V; 0.2-1mA)
- Power supply: 18 to 30V DC
- Explosion-proof
 - ▲ Suitable for Zone 1: Ex d IIC II 2G
 - ▲ Protection EEx d IIC (flameproof enclosure)
- IP 65



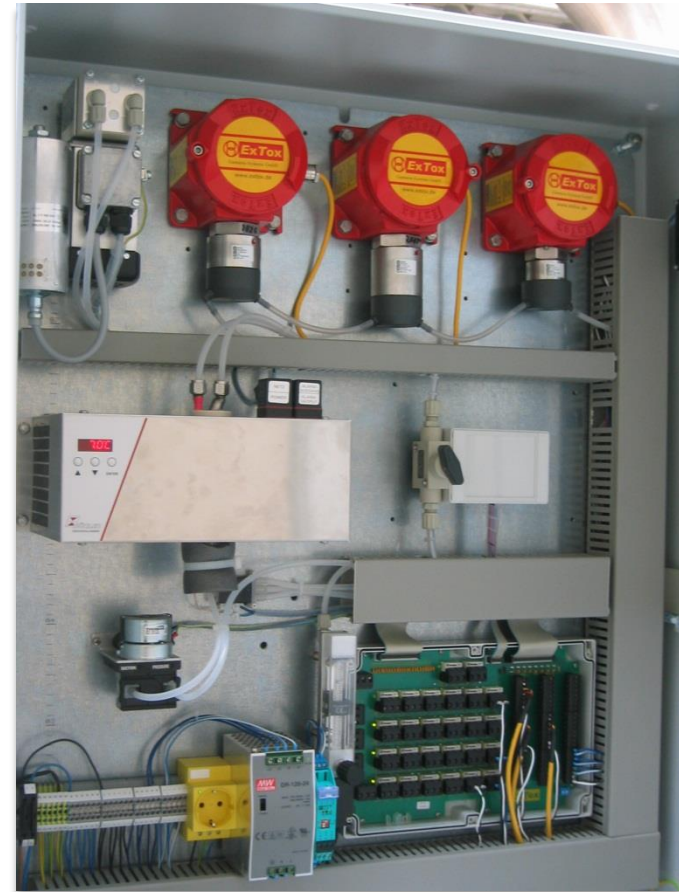
- Series Sens

- All sensor principles possible
- 4-20 mA output (alternative: 0-1V; 0-5V; 0-10V; 0.2-1mA)
- Power supply: 18 to 30V DC
- Explosion-proof (Types EC and KE)
- Suitable for Zone 2: Ex d IIC II 3G
- Protection EEx nA IIC
- IP 54



Integral Measuring Concepts (IMC)

- Integral Measuring Concept for monitoring of biogas systems
- Sampling and conditioning of measured gas, transmitter (such as CH₄, CO₂, O₂, H₂S) and evaluation combined in one compact wall mounted housing.
- Process of measurement especially designed for biogas application.
- At the same time possibility of continuous monitoring of ambient air (such as CH₄, H₂S)
- Maximum length of sample line $\geq 50\text{m}$
- Eight 4-20 mA-Outputs
- RS232 / RS485
- Profibus-Adapter possible



IMC: Short Introduction

